



Gaumard®
Simulators for Health Care Education

Pediatric HAL® S3005

Five-Year-Old Pediatric Simulator

- Simulation Made Easy®
- Proven HAL technology
- Tetherless with wireless communications
- Fully responsive, even during transport
- On-the-fly or scenario-based control
- Includes Pediatric HAL® Simulation Learning Experiences™ scenario package

Deliver high-quality pediatric simulation-based training with Pediatric HAL®.

From nursing to emergency care, Pediatric HAL allows you to train teamwork and patient care skills through hands-on exercises. Pediatric HAL is wireless and tetherless and remains fully functional while being moved from place to place.



Realistic airway

Supports oral and nasal endotracheal intubation and features a tracheostomy site for care exercises.



Airway and breathing

Programmable chest rise and respiratory patterns.



Real-time CPR feedback

Realistic chest recoil, visible chest rise with PPV, and variable central cyanosis.



Intraosseous access

Intraosseous infusion and injection system with realistic tibia bones.



Supports real monitors

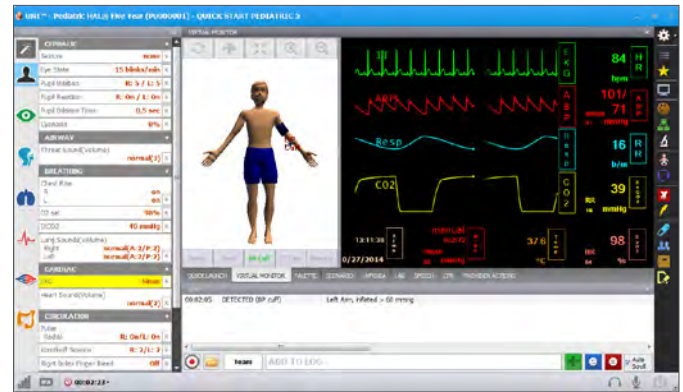
Monitor BP and ECG. Pace and defibrillate using live energy. Detects placement of real pulse oximeter.



IV Access

Supports bolus, infusion, and sampling.

- Use our preprogrammed scenarios designed by medical professionals. Modify them or quickly create your own
- Use our library of preprogrammed physiologic states, modify them, or specify Pediatric HAL's condition using the Details page
- Save each condition as a physiologic state on the palette page
- Control Pediatric HAL using a wireless PC to quickly generate multiple life-threatening situations and track the actions of care providers



Includes the new Pediatric HAL® Simulation Learning Experiences™ scenario package.

The new Pediatric HAL Simulation Learning Experiences (SLEs) package provides you with a library of ready-to-use, evidence-based scenarios designed to help you maximize participant's learning through outcome-focused simulated clinical patient encounters. The package includes 10 SLEs complete with a facilitator's guidebook for planning, setting up, and facilitating each learning experience.

1. Acute Lymphocytic Leukemia
2. Appendicitis
3. Post-Op Cardiac Transplant
4. Potential Organophosphate Poisoning
5. Respiratory Syncytial Virus (RSV)
6. Sepsis in a Six-Year-Old
7. Seizure Management
8. Status Asthmaticus
9. Trauma Related to Child Abuse
10. Five-Year-Old with Trauma

Clear	Load	Save
Girl w VTach		5 year old female with heart condition is weak pulse and diminished perfusion.
Girl w VTach	+ Item	+ Path
Girl V Tach	00:20	ventricular tachycardia, low BP, low ...
Speech 1	00:01	complaint - Heart jumping
Wait Indefinitely	...	Cardioversion expected...
Speech 2	00:01	urgency - Ouch
Girl slow sinus	00:40	HR 65, vitals start improving
Girl V Tach	00:20	ventricular tachycardia, low BP, low ...

- Select Pediatric HAL's physiologic states from the palette page and combine them to build a scenario
- Select the time Pediatric HAL is in each state
- Build in delays between states or specify smooth transitions
- When activated, Pediatric HAL will progress from one state to the next
- Use stylus control to branch to a different state should the team treat Pediatric HAL incorrectly without stopping the scenario
- Invoke Pediatric HAL's extensive library of voice responses at any time and combine them to facilitate a dialogue
- Actions are logged and time-stamped for evaluation and debriefing

Features

General

- Simulation Learning Experiences™ scenario package
- Physical size of a 5-year-old child
- Tetherless and wireless; fully responsive during transport¹
- Supports common patient positions including Fowler's, supine, and sitting
- Internal rechargeable battery provides up to 3 hours of tetherless operation²
- Available in light, medium, or dark skin tone at no extra charge
- Programmable blinking rate
- Independent, active pupillary light reflex
- Seizures with selectable intensities

Airway

- Wireless streaming voice option
- 50+ prerecorded speech responses
- Anatomically accurate oral cavity and airway
- Programmable normal and abnormal airway sounds synchronized with respiration
- Programmable crying included with streaming voice option
- Oral and nasal endotracheal intubation
- Supports NG/OG tube placement (dry exercises only)
- Programmable tongue edema
- Tracheostomy care site; tracheal suctioning (dry exercises only)
- Tracheal intubation depth detection and logging

Breathing

- Visible chest rise with positive pressure ventilation
- Ventilations are measured and logged in real-time
- Spontaneous breathing with selectable respiratory patterns
- Programmable respiratory rate and inspiratory: expiratory ratio
- Programmable unilateral chest rise and fall
- Real CO₂ exhalation option
- Selectable normal and abnormal lung sounds
- Bilateral anterior lung sounds
- Posterior lung sounds
- Unilateral chest rise with right mainstem intubation

Circulation

- eCPR™ Real-time CPR performance monitoring and training
- Chest compressions generate palpable pulses
- Programmable heart rate and healthy and abnormal heart sounds
- Includes comprehensive library of ECG rhythms with customizable beat variations
- Supports ECG monitoring with real devices
- Defibrillation, cardioversion, and pacing using real devices and live energy
- Anterior/posterior defibrillation sites available as an option³
- Central cyanosis with variable intensities
- Detects placement of real pulse oximetry devices
- Bilateral palpable: pulses carotid, brachial, radial, and femoral
- Blood pressure can be measured with BP cuff via auscultation and palpation
- Realistic Korotkoff sounds
- Bilateral IV access: bolus, infusion, and sampling
- Intraosseous access proximal tibia

Other

- Gastric distension with excessive BVM ventilation or esophageal intubation
- Selectable normal and abnormal bowel sounds
- Urinary catheterization with fluid return
- Interchangeable female and male genitalia

Pediatric HAL® S3005

S3005.PK

S3005 Pediatric HAL, tablet PC with UNI® software, SLE courseware package, RF communications module, Bluetooth communications module, battery charger, accessories, carrying case, user manual. One-Year Limited Warranty. Extended service plans available. Skin tones available at no extra charge.

Gaumard Vitals™ Bedside Virtual Monitor

30080154B

Gaumard Vitals bedside virtual patient monitor. Simulates 20+ dynamic numerical parameters and waveforms. Customizable interface.

Gaumard Vitals™ Portable Virtual Monitor

30081003A

Portable Gaumard Vitals virtual patient monitor. Simulates 20+ dynamic numerical parameters and waveforms. Customizable interface.

Wireless streaming audio³

S3005.300

Add pre-recorded crying or be the voice of Pediatric HAL and increase realism during simulated patient-provider interactions.

CO₂ exhalation regulator

S3005.178

Real and measurable EtCO₂ with 10 programmable levels of CO₂ output.

Care in Motion™ Mobile Video Debriefing System

CIM.PK

Care in Motion Tablet PC, 3 Battery-powered HD wireless cameras, 3 adjustable camera grips, transport case. One-Year Limited Warranty. Extended service plans available.

Request a quote

www.gaumard.com/quote

sales@gaumard.com

Toll-Free USA & Canada

1.800.882.6655

Worldwide 305.971.3790